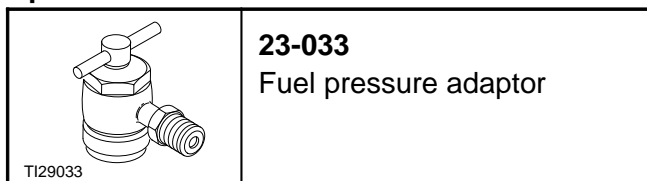




Fuel Injectors – Remove and Install (23 455 0)

Special Tools

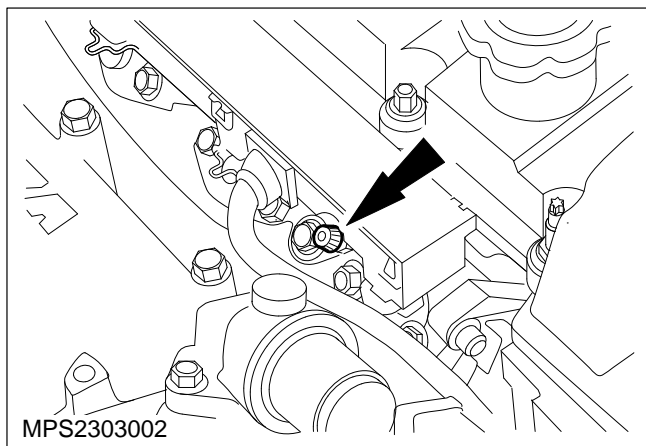



Remove

 **WARNING:** Do not remove individual injectors from the fuel rail when fitted to the engine as contents of fuel rail may flood the cylinder.

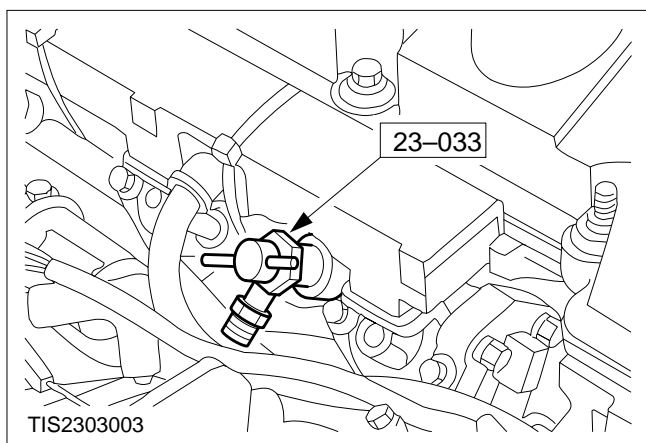
 **CAUTION:** Disconnect the battery negative lead.

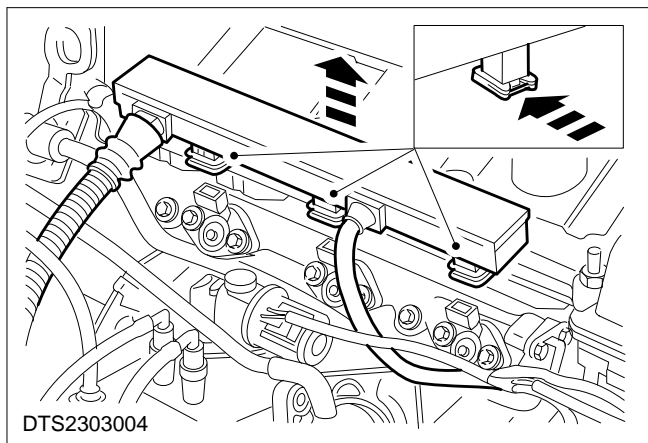
1. Remove the valve cap (2,0 DOHC shown).



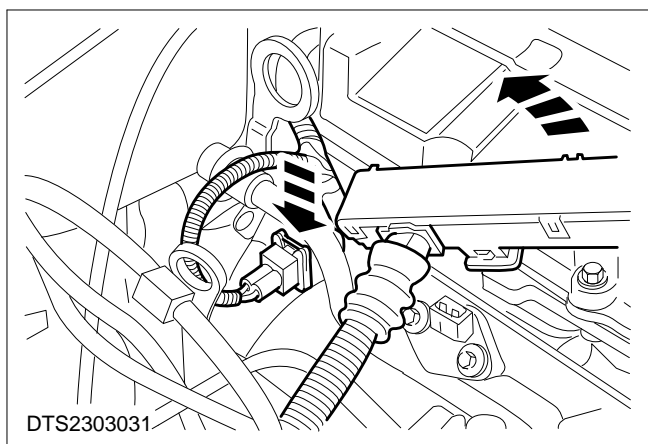
 **WARNING:** Ensure that the tap on the fuel pressure adaptor is turned fully anticlockwise before fitting and be prepared for some fuel spillage. Observe fuel handling precautions.

2. Fit the fuel pressure adaptor and release the fuel rail pressure (2,3 DOHC shown).
3. Remove the fuel pressure adaptor and refit the valve cap.



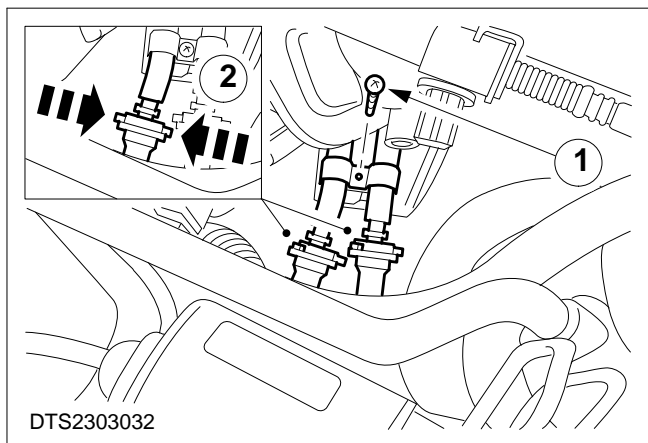


- 4. Disconnect the fuel injector rail multiplugs.**



- 5. Disconnect number four injector.**

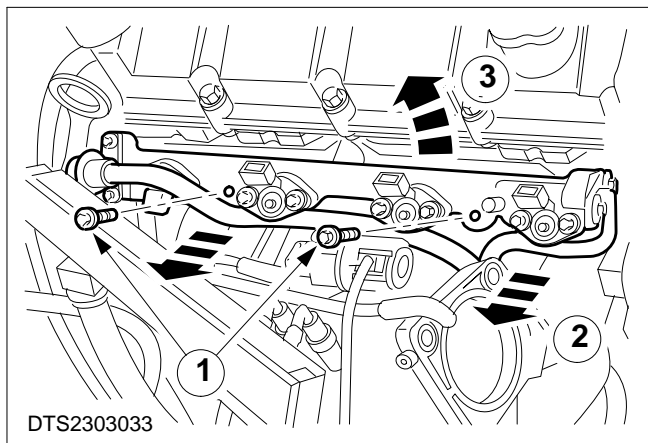
Disconnect the number four injector multiplug and lift the loom clear to allow unobstructed access to the fuel rail.



⚠ WARNING: Be prepared for some fuel spillage. Observe fuel handling precautions.

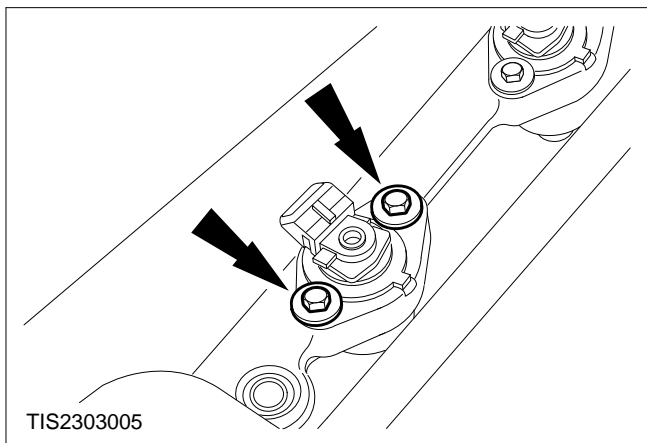
- 6. Disconnect the fuel rail supply and return pipes.**

- 1 Remove the pipe clamp retaining screw.
- 2 Disconnect the quick release connector on each pipe and detach.

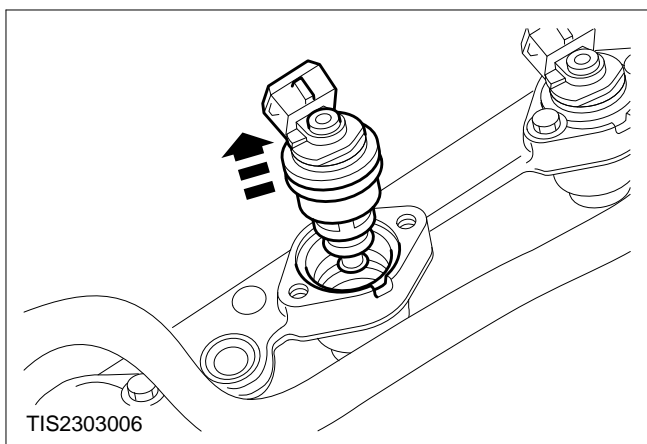


- 7. Remove the fuel rail.**

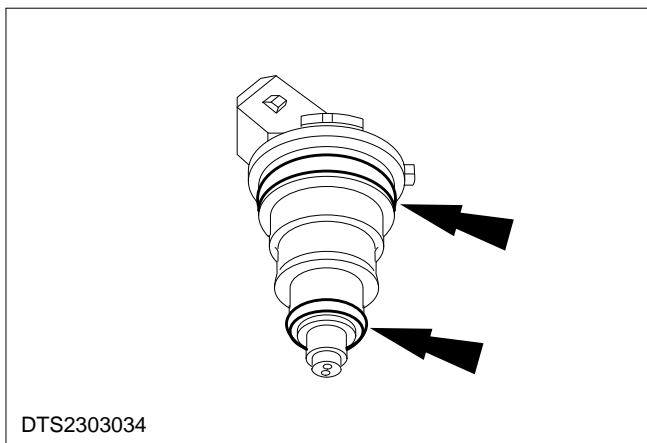
- 1 Remove the two retaining screws.
- 2 Lift and release the fuel rail from its seating.
- 3 Remove the fuel rail guiding the fuel pipes clear of the intake trunking (intake shown removed for clarity).



8. Remove the two fuel injector retaining bolts.



9. Remove the fuel injector/injectors.



Install

⚠ CAUTION: When refitting injectors ensure the locating key is fully seated before tightening the bolts.

10. Refit the components in reverse order.

New injector seals should be used. Lightly lubricate the fuel injector seals with clean engine oil before fitting.

